

Name your session.

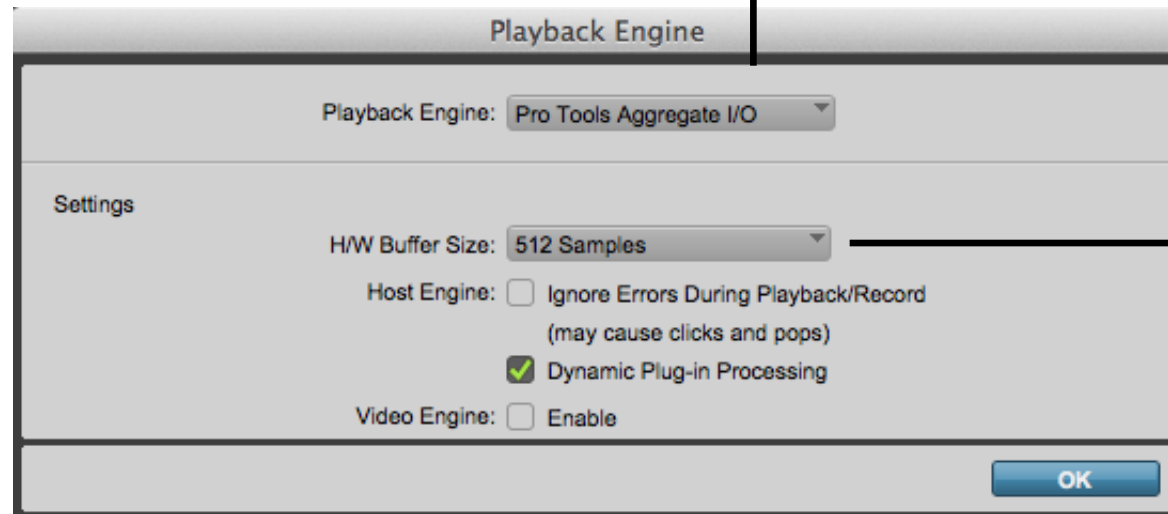
Bit depth: 16bit is CD quality, can change to 24bit for higher quality recordings (will use more CPU/processing power and create large files).

Sample rate: 44100 is CD quality, can change to 48000 for higher quality recordings (will use more CPU/processing power and create larger files).

To save your Pro Tools session onto an external hard drive, ensure you copy the entire Pro Tools session folder, which includes all the media files and settings.

\*\*\*In the Digital Media Lab any files on the PCs will be deleted when logged off – ensure you save the Pro Tools session folder to your external storage device and regularly save [Control+ s]\*\*\*

Setup > Playback Engine. In the DML it should be ASIO4ALL. If using an external audio device ensure this is selected (in Edge Recording Studio this will be 'HD Native')



**New tracks** need to be created for recording audio and MIDI.  
Track > New

Add multiple new tracks by click the + icon

**Buffer Size:** The higher the buffer size the more delay between what's 'played' and what's 'heard'/recorded.  
  
128 or 256 samples is best for recording.  
  
512, 1028 sample rates can be used during mixing to reduce audio drop outs/glitching as computer has more time to process sound before playback (hence higher latency/delay).

# Intro to Pro Tools

Changing between the **Mix window** and **Edit window** can be useful for different stages of your production. Window > Mix or Edit

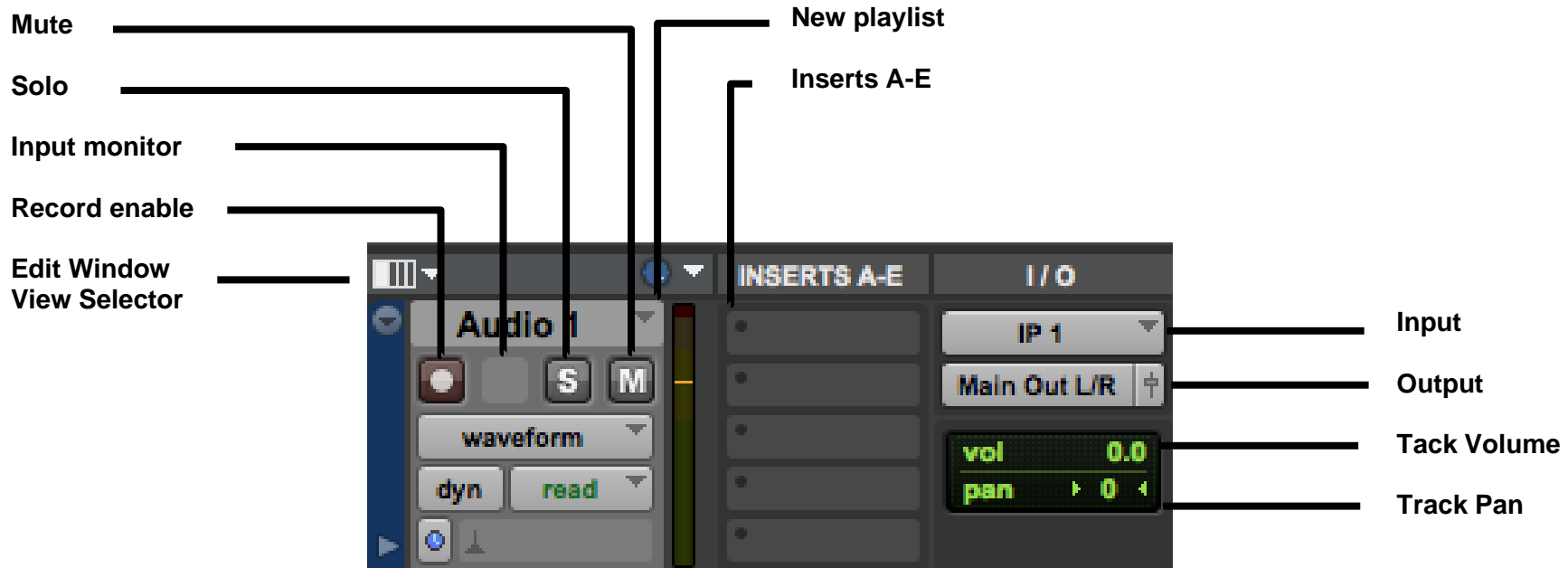
Edit Window



Mix Window



Intro to Pro Tools



**Edit window view selector:** menu for displaying Inserts, I/O (inputs outputs) and Instruments

**Record enable:** blinks red when track is enabled for recording

**Input monitor:** monitor input during playback without recording (only available in some versions of Pro Tool)

**Solo:** mutes all other tracks – Yellow indicates solo activated

**Mute:** mutes the audio output of this channel

**New playlist:** creates new playlist for multiple clips in one track

**Inserts A-E:** insert plug-ins here such as Compression and Reverb or Virtual Instruments for Instrument tracks

**Input:** selects the audio input of the track for recording

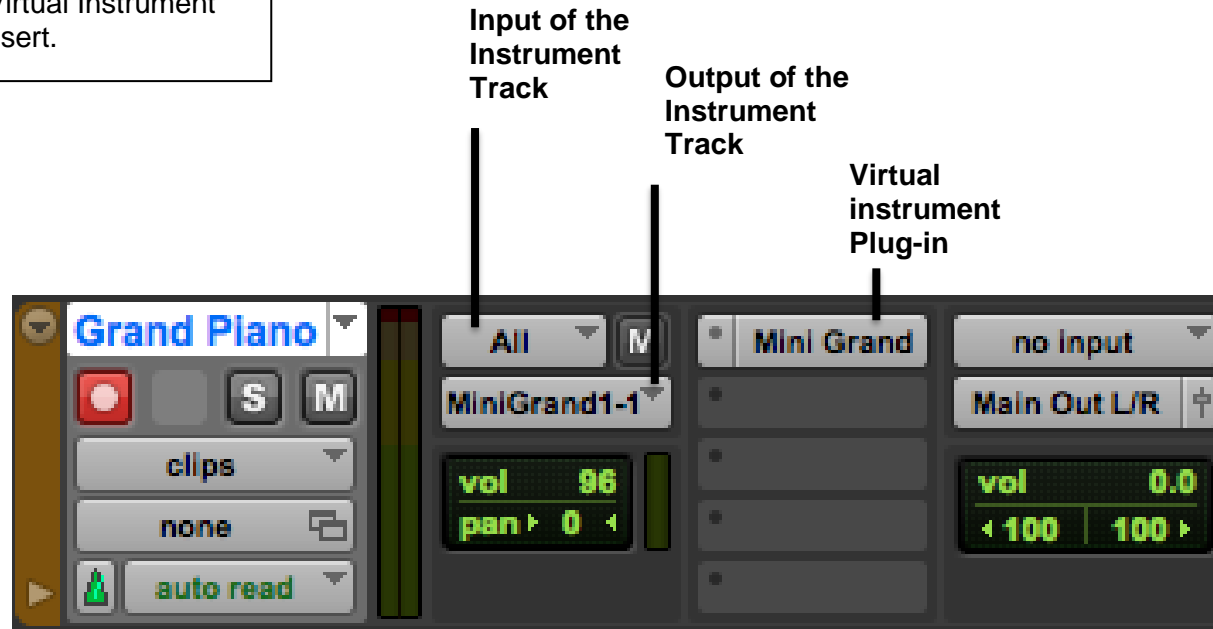
**Output:** selects the audio output for monitoring

**Tack Volume:** modify the tracks volume

**Track Pan:** Left and right

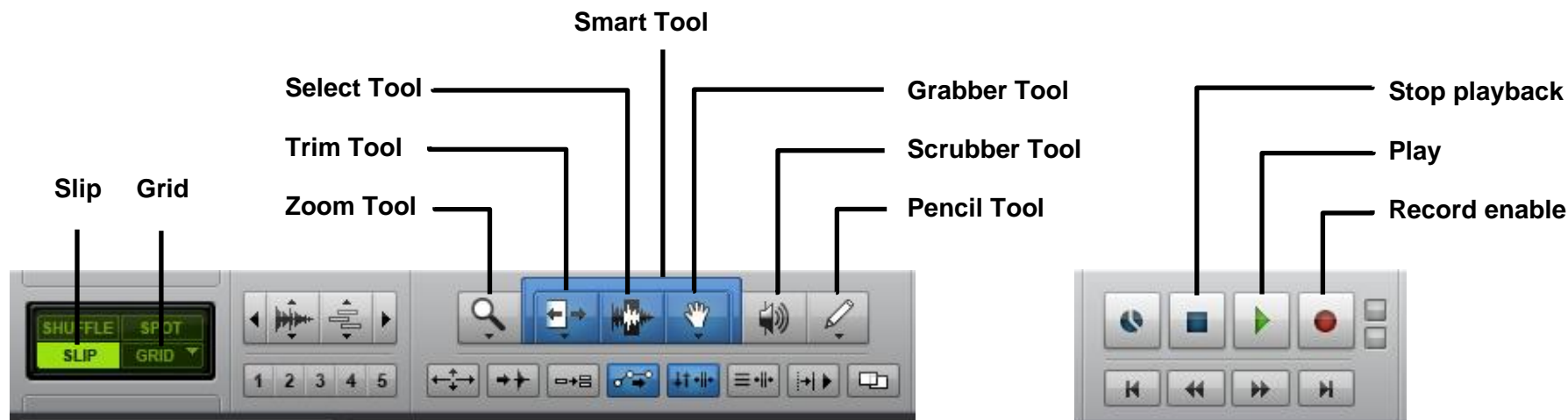
## Intro to Pro Tools

**Instrument tracks** allow you to record MIDI with Virtual Instrument plugin-ins as an insert.



**MIDI** is an acronym that stands for Musical Instrument Digital Interface. It's a way to connect devices that make and control sound — such as synthesizers, samplers, and computers — so that they can communicate with each other, using **MIDI messages**. This lets one keyboard trigger sounds on another synthesizer, and it makes it possible to record music in a form that allows for easy note editing, flexible orchestration, and song arrangement. Virtual instruments — computer programs that simulate hardware synthesizers and samplers — also communicate with computer sequencing software running on the same computer using MIDI messages.

## Intro to Pro Tools



**Slip mode (F2)** Move your clips freely off the grid

**Grid mode (F4)** Move your clips and snap to the grid

**Zoom tool (F5)** Zoom in and out of session

**Trim tool (F6)** Allows you to change the length of your clip. Hover over the either edge of your clip and click and drag.

**Select tool (F7)** Make a selection of audio/midi.

**Smart tool (F7+F8+F9)** Groups the Trim, Select and Grabber tools together. Hover over different sections of the clip to use each tool

**Grabber tool (F8)** Grab audio or midi clips.

**Scrubber Tool (F9)** Plays play selected clips individually

**Pencil Tool (F10)** Draw in MIDI notes, automation or even waveforms.

**Stop playback (Spacebar)**

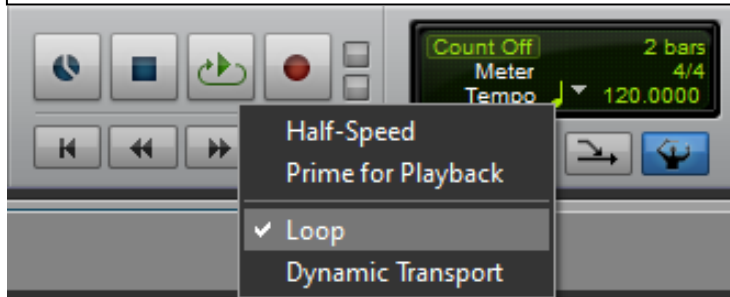
**Play (Spacebar) NOTE\*** Hold Ctrl and click play to engage loop mode

**Record enable NOTE\*** Hold Ctrl and click to engage quick punch.

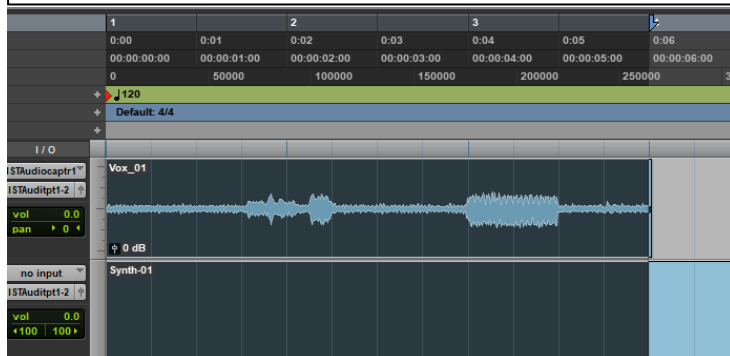
**Record + Play (F12 or 3 on keypad) NOTE\*** Individual track(s) must be record enabled to be able to record.

Intro to Pro Tools

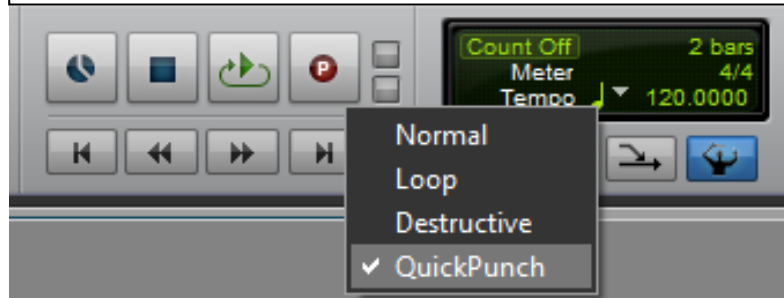
To active '**Loop Playback**', right click on the play button and select 'Loop'. This will continuously loop playback on the selection you have made in the edit window.



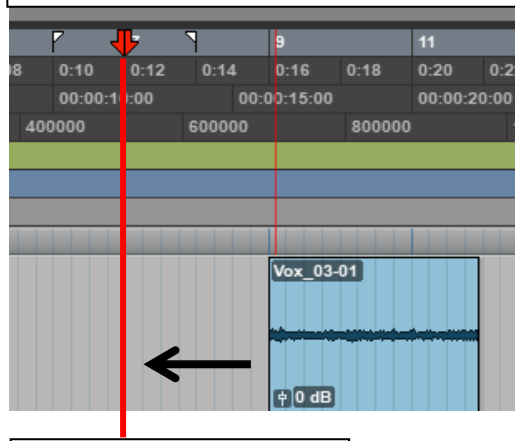
Once '**Loop Playback**' is selected, you can make a selection in the edit window and press play for continuous looped playback of your selection.



To active '**QuickPunch**', right click on the record button and select 'QuickPunch'. If audio tracks are record enabled, QuickPunch allows you to hit record during playback and drag the recording back to where you first began playback. This is very useful if an artist gives an impromptu performance during playback.



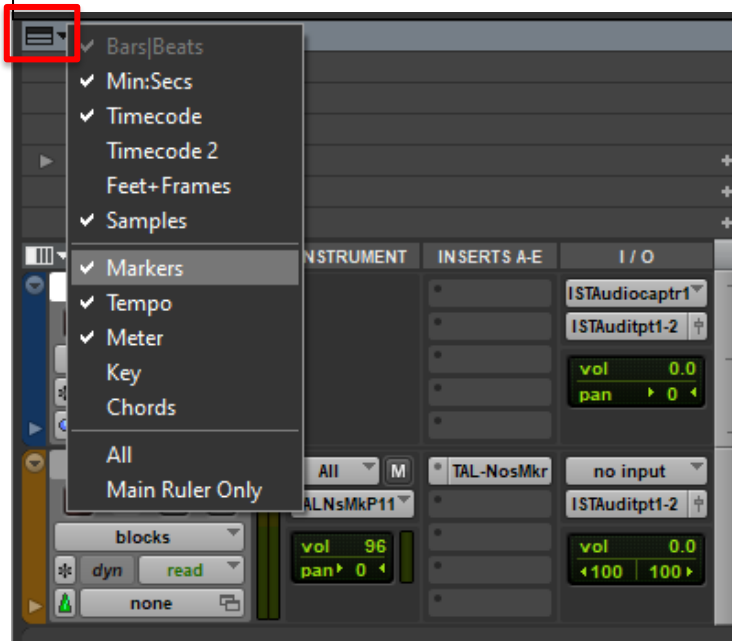
Once '**Quick Punch**' is selected, you can drag your recording back to where you began playback before you began recording.



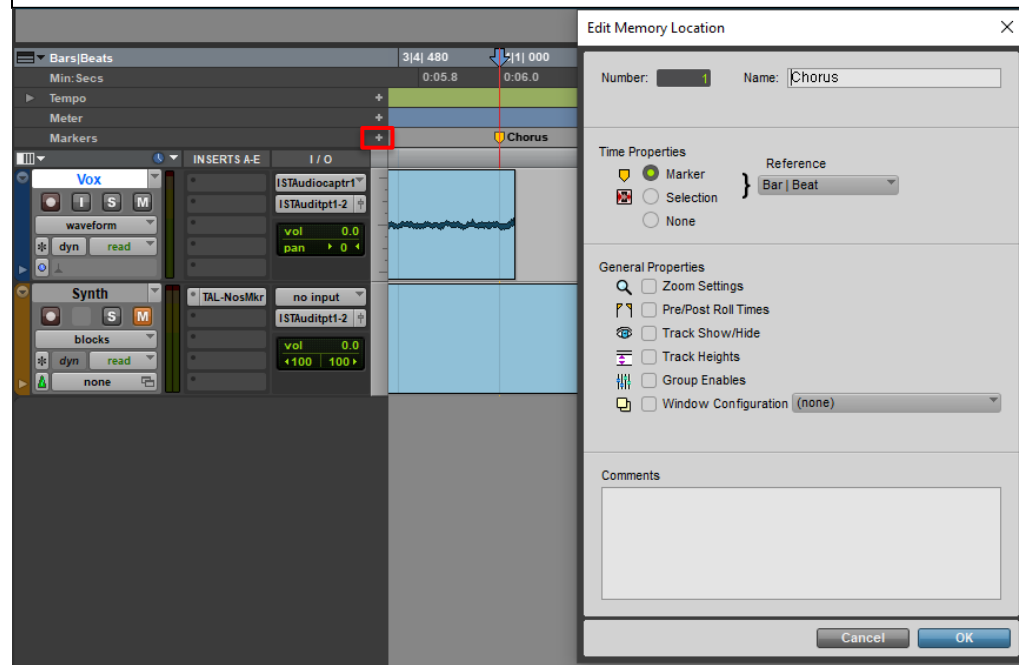
Beginning of playback.

## Intro to Pro Tools

To create a **Marker**, first ensure 'Markers are selected in the Rulers menu.



Then make a selection in the edit window in the timeline. To create the marker Hit the + symbol on the Marker ruler or hit Enter on the numeric keyboard. This is useful for organising your song structure. For example, intro, verse, chorus, bridge etc

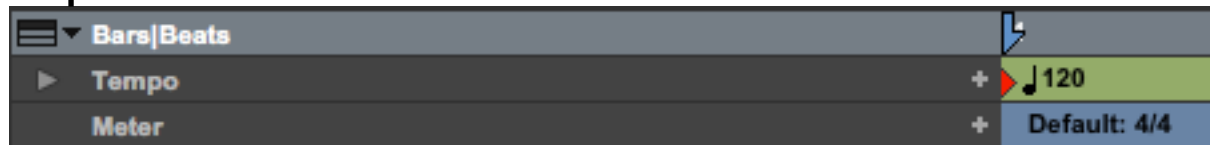




## Intro to Pro Tools

To set the tempo for the session it is best to first create a click track. Track > Create Click Track

To change the tempo of the session, ensure tempo and meter is selected from the Rulers menu



Click on the + to change the Tempo or Meter

To show MIDI controls. Right click on tool bar. Select MIDI controls



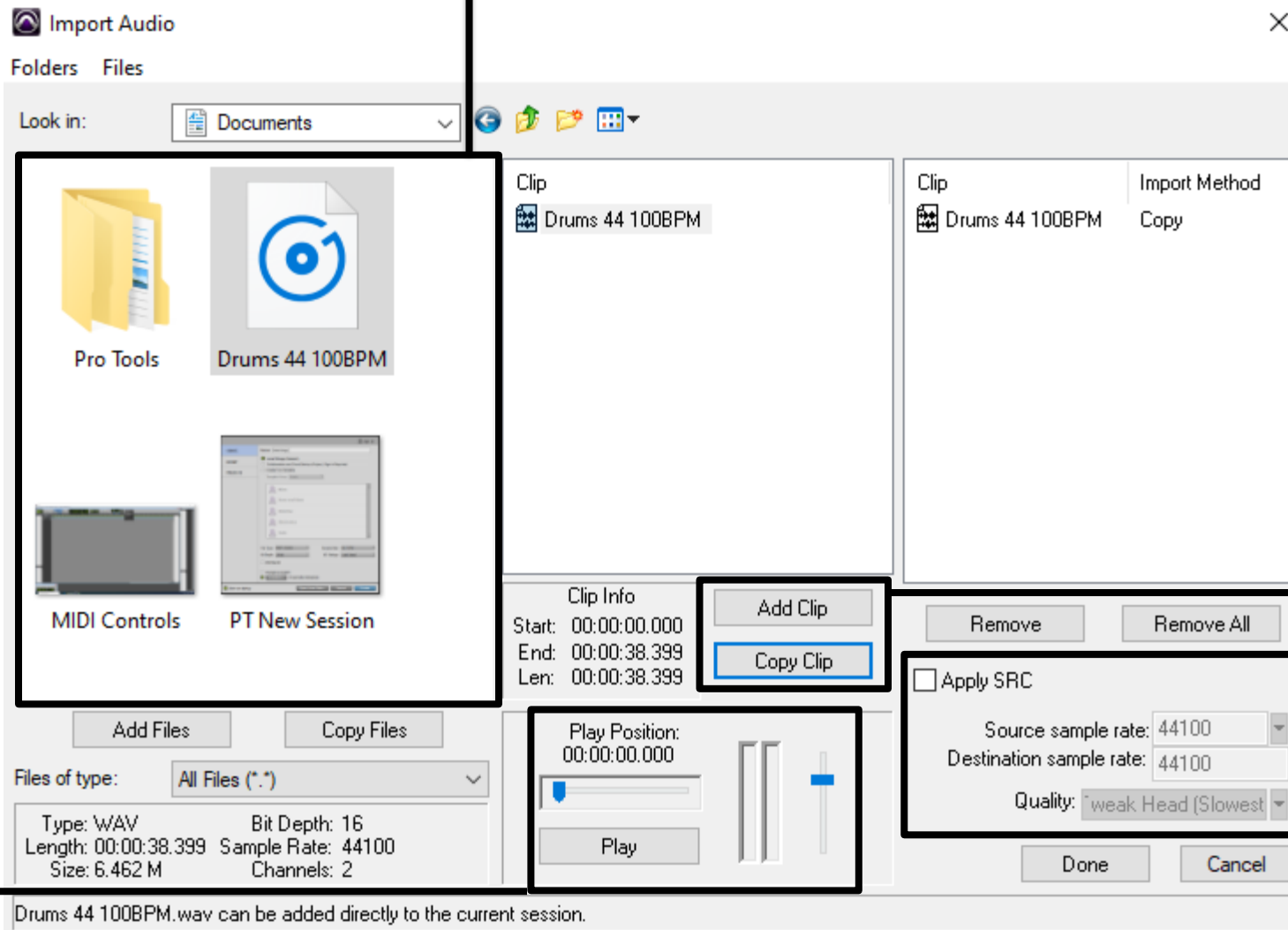
You can also tap the tempo in manually. First, deselect the "conductor" icon

Second, select the Tempo number and tap T on the keyboard at the tempo you desire. NOTE\* make sure the playback cursor is at the beginning of your session.

Intro to Pro Tools

Importing audio is useful when adding loops, samples or any other audio to your session. File > Import > Audio

Select the audio clip to import



Add or Copy audio. Copy will allow you to convert the audio clips sample rate to the same as your session

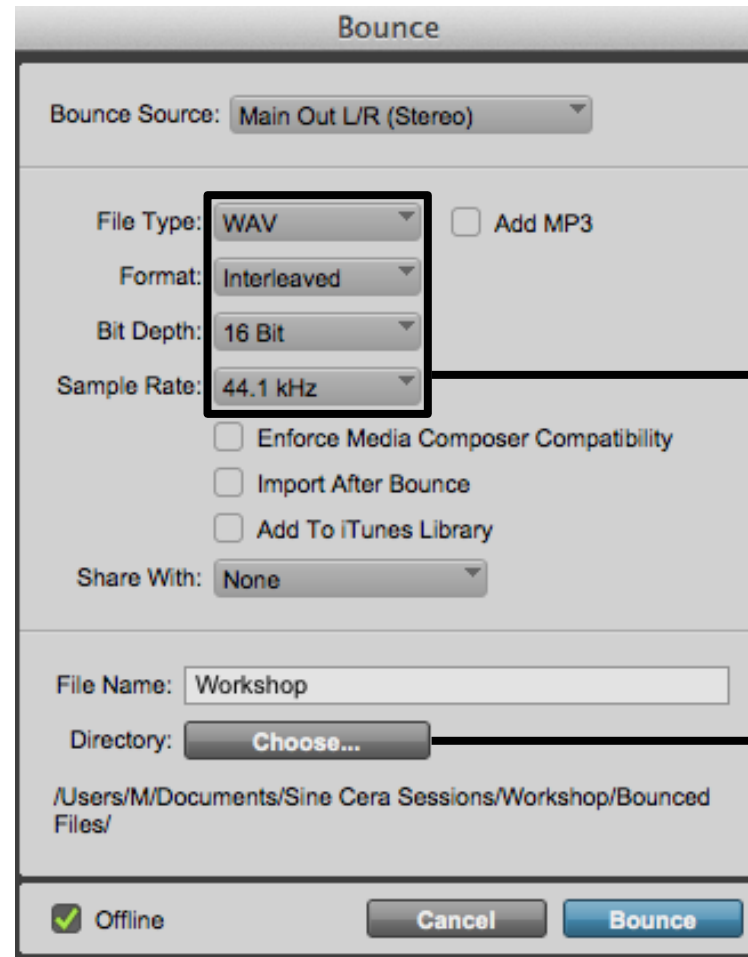
Conversion settings.

Preview the audio clip

Drums 44 100BPM.wav can be added directly to the current session.

Intro to Pro Tools

To export your session into a stereo WAV form, you need to Bounce To Disk.  
File > Bounce to > Disk



Bounce settings. It is important the Bit Depth and Sample Rate match or is below your recording session settings. Format should always be Interleaved.

Choose the destination of your bounced audio file.

## Intro to Pro Tools

### Pro Tools Keyboard Shortcuts:

Action	Mac	Windows
Save	Command+S	Ctrl+S
New Track	Command+Shift+N	Ctrl+Shift+N
Play	Spacebar	Spacebar
Record	F12, or 3 (on numeric keypad)*	F12, or 3 (on numeric keypad)
New Playlist	Ctrl+\	Start+\
Undo	Command+Z	Ctrl+Z
Copy	Command+C	Ctrl+C
Paste	Command+V	Ctrl+V
Repeat clip	Option+R	Alt+r
Zoom in	T	T
Zoom out	R	R
Import Audio	Command+Shift+I	Ctrl+Shift+I
Fade in/out	Make selection then press F	Make Selection then press F
Separates selected region	Command+E	Ctrl+E
Heal Separation	Command+H	Ctrl+H
Group Tracks	Command+G	Ctrl+G
Edit/Mix window	Command+=	Ctrl+=
Add Marker	Enter (On numeric keyboard)	Enter (On numeric keyboard)
Bounce To Disk	Command+Option+B	Cntrl+Alt+B

NOTE\* You must turn on Keyboard Focus on the top right side of your Edit window to use shortcuts

