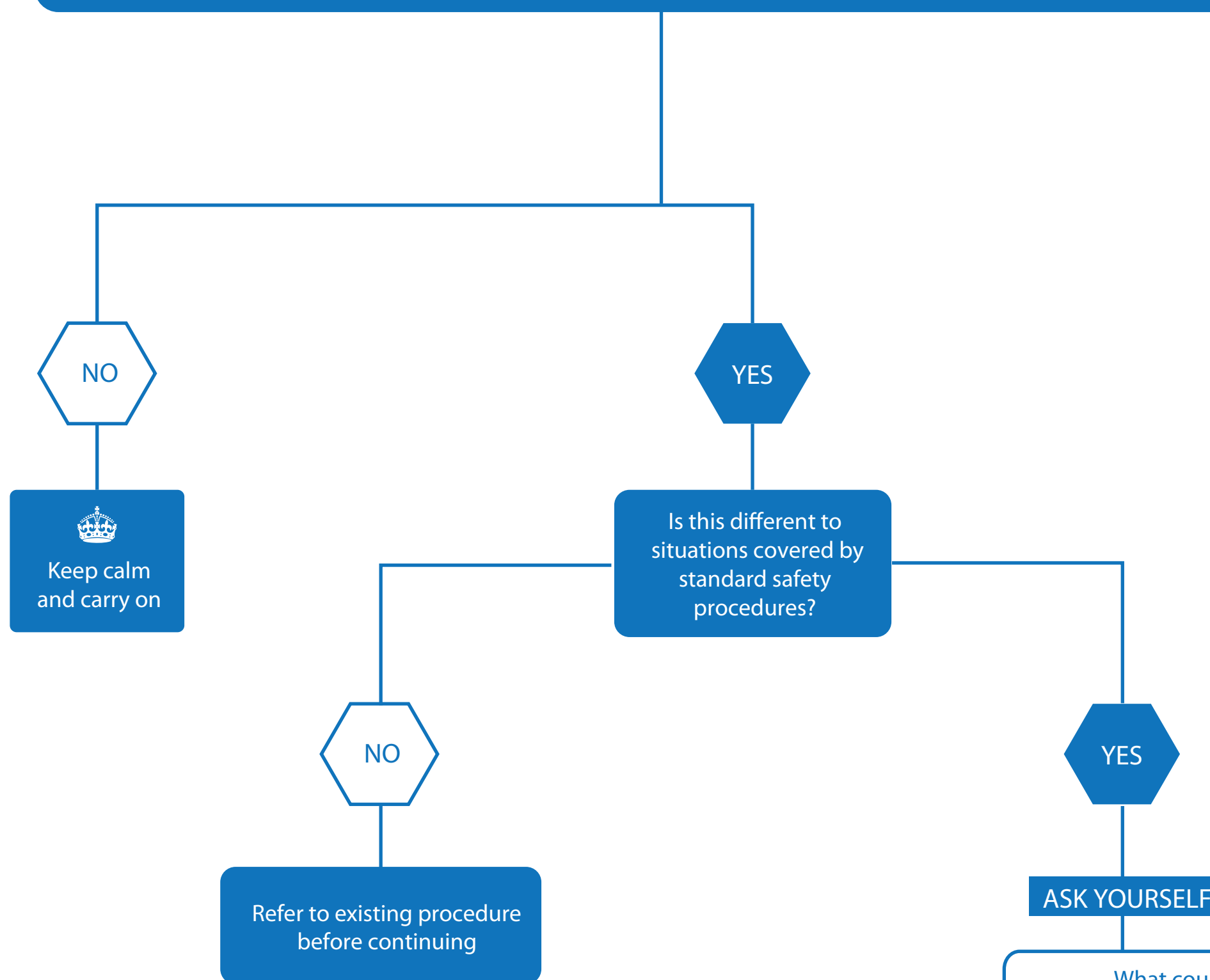









IS THERE A PART OF MY TASK THAT EXPOSES PEOPLE TO AN UNTREATED HAZARD?



HIERARCHY OF CONTROL MEASURE

- 1  Eliminate the hazard
- 2  Substitute the hazard
- 3  Isolate the hazard
- 4  Use engineering controls
- 5  Use administrative controls
- 6  Use personal protective equipment
- 7  Transfer risk

- 1  What could go wrong in this process?
How likely is it to go wrong?
How serious are the outcomes of things going wrong?
- 2  What do we usually do in these situations?
- 3  What's the best way to treat this risk until we can get a treatment plan approved?
- 4  Does the interim treatment plan make the activity sufficiently safe or do I need to find a better solution?
- 5  Who do I need to let know about this?
 Record the risk in the Risk Register.
 Email your supervisor and the OH & S Representative advising them.