

MULTICAM

CNC ROUTING MACHINERY

MULTICAM M-2412

COMPUTER NUMERIC CONTROLLED ROUTER

Quotation Number: Q1103/16-1

PREPARED FOR:



PREPARED BY:

Peter Connolly
Queensland State Manager
Mob: 0423 574 712

DATE:

11th March, 2016

NSW OFFICE:

60 Enterprise Drive,
Beresfield, NSW 2322
Ph (02) 4964 1900
Fax (02)4964 1911
Mobile: 0412 930 269

QLD OFFICE:

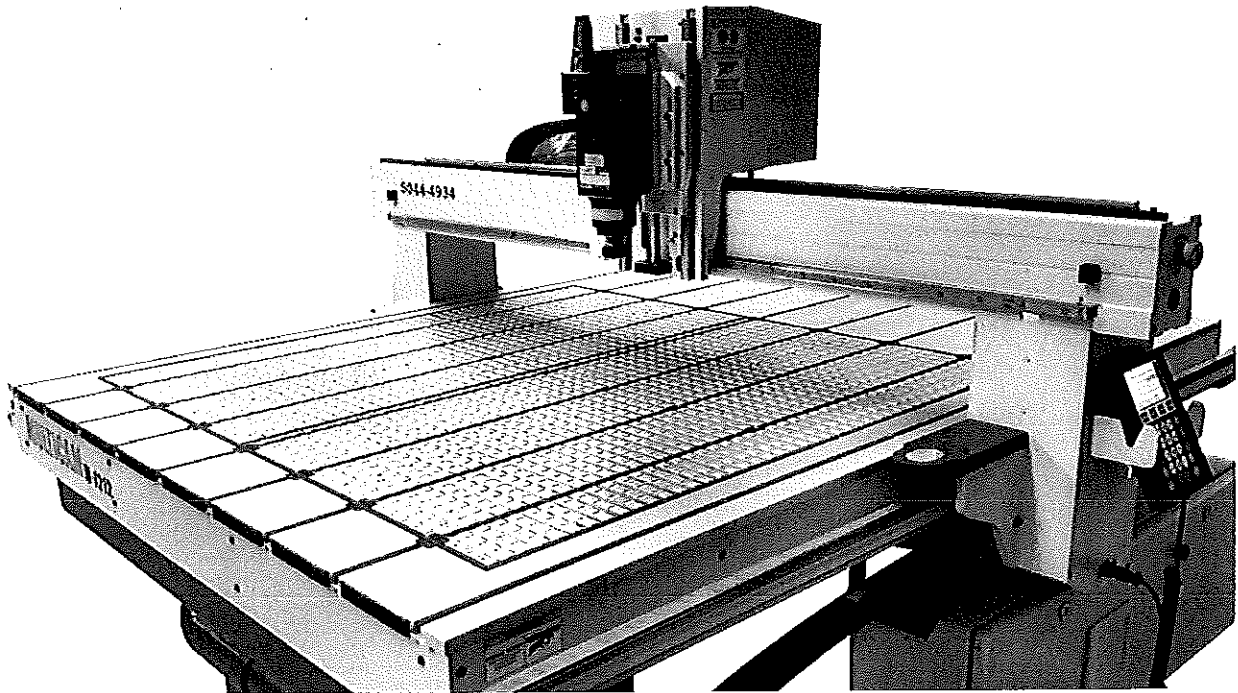
8/42 Trade St,
Lytton, QLD 4178
Ph (07) 3348 7866
Fax (07) 3348 4366
Mobile: 0423 557 781

VICTORIA OFFICE:

11/40 Ricketts Road,
Mt Waverley, VIC 3149
Ph (03) 9558 8022
Fax (03) 9558 8055
Mobile: 0412 109 271

Manufacturers & Suppliers Of: Multicam CNC Routing Machinery, Dust Extraction Systems, Production Routing Tools & CAD software.

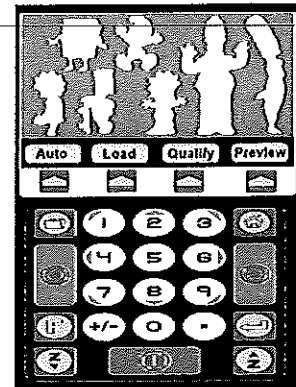
The Multicam M-2412 CNC Router



The M-2412 Series of CNC Routers offer the robust construction that Multicam products are known for, combined with an economical set of configurations at an affordable price.

MULTICAM STANDARD SYSTEM FEATURES include.....

- Large Colour Display Console.
- Gigabit Ethernet connection to a host LAN system.
- Wireless networking. (WiFi)
- Limitless file data storage.
- Remote accessibility activity log via Internet.
- Remote machine administration via Internet.
- Axis drive load Sensing.
- Automatic Tool Calibration.
- Tool History Log.
- Multiple spindle speeds in one file.
- Multiple axis feedrates in one file
- Individual part selection.



Smart Console with Large Colour Display

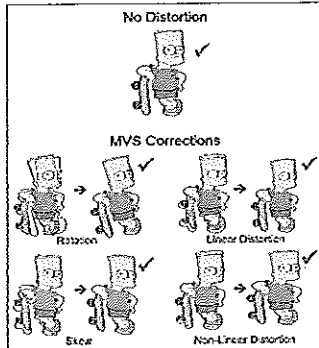
Multicam Systems are a member of the following associations:-



UNIQUE MULTICAM M SERIES OPTIONS

Multicam Vision System (MVS)

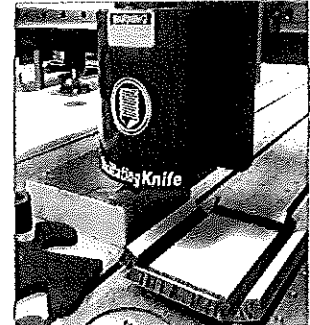
The Multicam Vision System is the most powerful vision registration system on the market. The primary application for the MVS system is digital print finishing where the camera is able to quickly find and recognise



conventional registration marks and adjust the machine cutting path as necessary to achieve exact alignment with printed shapes. The MVS includes full non-linear/linear distortion, skew and rotation correction. The MVS is compatible with all cutting tools that can be used on a Multicam router, including our Oscillating & Tangential knives. This allows virtually any printed material to be cut including card, vinyl, rubber, foam, aluminium, wood, acrylic and lots more which opens up many new markets and opportunities for digital printers.

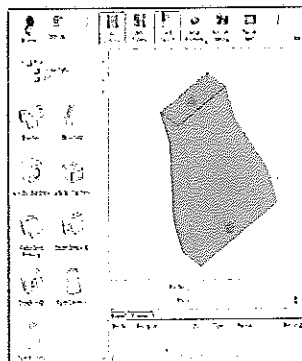
Oscillating Tangential Knife

The Multicam Oscillating Knife is a robust knife cutting tool designed for cutting heavier, thicker and harder materials than a traditional knife can cut. The new Oscillating Knife facility now greatly extends the Multicam's capability by allowing the processing of flexible and semi rigid media such as **X-Board, Foamboard, Closed Cell Foam, Plastic-covered Foam, Corrugated Cardboard and Plastic, Gasket Materials, Rubber, Cork, Carpet, Felt and other Single-ply Cloth or Fabrics.** These materials all present challenges for traditional routers or knife tools, but our Oscillating knife can slice through these materials with ease, delivering clean cut edges without fraying. Available attachments include the Sabre knife, Box Cutter, 45deg 'V' cutter and a Creasing Wheel.



Industry Specific Software

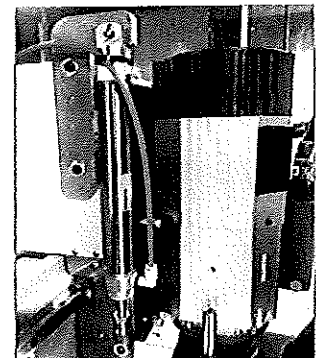
We have designed software specifically for the ACM, Ducting and Cabinet Industries. **Ezy Panel, Ezy-Duct and KitchenCAD Pro.** These programs allow a designer to create their own parametric templates to suit their products with just a few mouse



clicks. Each of the programs include true shape nesting for part optimisation, significantly reducing waste. These programs have been designed by Multicam Systems to help boost productivity and make the front end operation more efficient.

Air Assisted Surface To Depth System

A unique device designed by Multicam Systems for the Cabinet and ACM industries. Used in the cabinet and shopfitting industries for accurate material surface to depth control when routing with profile tools or producing pencil round edges, and in the ACM industry for



V-grooving aluminium-polymer composite materials. eg Alpollic, Alucobond The surface to depth system is essential to ensure a constant depth of cut into the material and compensates for any variations in the material thickness.

EDUCATIONAL INSTITUTIONS CURRENTLY USING MULTICAM CNC ROUTING MACHINES

- Adelaide Hills Trade Training Centre
- Australian Technical College - Hunter
- Australian Technical College - Bendigo
- Australian National University - College of Fine Arts
- Barker College - Furniture & Design Technology Department
- Box Hill Institute of TAFE - Centre for Building and Furniture Studies
- Burgmann Anglican School - Faculty of Design Technology
- Chisholm Institute - Woodworking Department
- Curtin University of Technology
- Deakin University - Faculty of Science and Technology
- Erindale College - Trade Training Centre
- Geelong Grammar School
- Glasshouse Country Christian College
- Hallam Senior College
- Hamilton Secondary College - Training Campus
- Hunter Institute of Technical & Further Education - Signwriting and Industry faculty
- Iona College - Faculty of Industrial Design and Technology
- Kings Christian College
- La Salle College
- Lake Tuggeranong College - Trade Training Centre
- Macquarie University - Faculty of Science
- Macquarie University - Faculty of Engineering
- New Norfolk High School - Materials, Design & Technology Department
- Northland Secondary College
- Queensland University of Technology - Faculty of Architecture, Interior and Industrial Design
- RMIT University - School of Aerospace, Mechanical & Manufacturing Engineering
- Scotch Oakburn College
- Sheldon College - Department of Technology
- South West Regional College of TAFE - Faculty of Woodworking
- St Michael's College - Faculty of Design Technology Education
- St Paul's School - Faculty of Industrial Design and Technology
- St James College
- Studentworks - Launceston
- Swinburn University of Technology - Faculty of Design
- TAFE - Hunter Institute Maitland Campus
- TAFE NSW Riverina Institute - Furniture and Design
- The Kings School - Industrial Arts Faculty
- Ultimo TAFE
- University of Tasmania - School of Arts
- University of Melbourne - Faculty of Architecture and Design
- University of Melbourne - Faculty of Engineering
- University of Sydney - Faculty of Architecture
- University of Newcastle - Department of Design
- University of New South Wales - College of Fine Arts
- University of South Australia - School of Architecture and Design
- University of Canberra - Faculty of Arts and Design
- University of Queensland - Faculty of Engineering and Information Technology
- Upper Coomera State School
- Urbrae Agricultural High - Faculty of Technology
- Victoria University of Technology - Sign and Graphics Faculty

DESCRIPTION OF GOODS

ITEM 1

1 Only New 2016 Multicam M- 2412 CNC Routing Machine complete with 2400mm x 1200mm process area. Steel frame construction providing a strong, rigid structure for a high quality and accurate cut finish. All Multicam series machines include our A2MC controller with Compact Flash technology.

- | | |
|-----------------------------------|---|
| Table top: | Unique ISO T-Slot / Vacuum table. |
| Vacuum Pump: | 7.5hp Multicam Vacuum pumps which has a flow displacement of 490m ³ /h each which provides longer work holding. Includes manifolds, air filters, and all fittings. |
| Vacuum zones: | Our innovative Vacuum zone system allows the operator to activate and deactivate vacuum zones according to sheet sizes. 4 x 1200mm x 600mm zones are included. |
| Automatic Tool Tip Sensor: | Standard on all Multicam machines is our soft touch tool tip sensor, this devise automatically measures the tool length when new tools are added to a job |

ITEM 2

3Hp Elite Routing Spindle

Includes 3Hp Elite Collet Change High Frequency Spindle, Inverter driven for constant torque while cutting and 3Phase programmable electronic inverter.

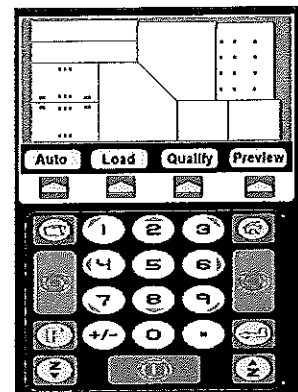
ITEM 3

The Multicam A2MC Controller

The A2MC delivers much smoother and faster motion based on S-Curve velocity trajectories than any controller on the market in Australia. Machine acceleration is controlled by dynamic G-Force parameters, not fixed linear parameters used on older technology routers. Connections to the machine controller is through a TCP/IP connection to a host LAN system. There are no functional limits on the job size you can run on this controller.

A2MC Features include:

- Smart Console with large colour display for job preview.
- Watch the cut process "live" on display.
- Hot Keys for full control of spindle, dust, vacuum & all peripherals
- Ethernet connection from machine to a host LAN.
- WiFi Networking.
- Windows style file navigation on machine.
- High Speed USB2 data transfer.
- Tool Log History.
- Axis drive load.

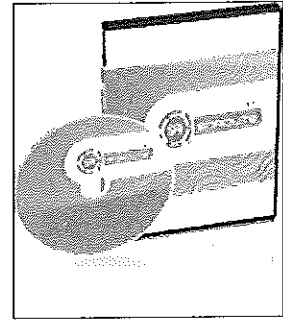


continued.....

ITEM 4

Enroute 5.1 CAM Routing Module

Enroute 5.1 Toolpath CAM module is included with your Multicam CNC routing machine. Enroute CAM connects your design software automatically to the Multicam CNC Router. Enroute has many optional modules available.



ITEM 5

Accessories

Routing tools to the value of \$250.00, 3x Mixed Collets, reference manual, wireless router.

Total Investment: **\$50,350.00**
Plus GST

Approximate Multicam Finance Costs:

Based on the above Items 1 - 5

For **5 Years** with **20% residual**:

\$188.00 per week approx TAP.

Mr. Leigh Martin

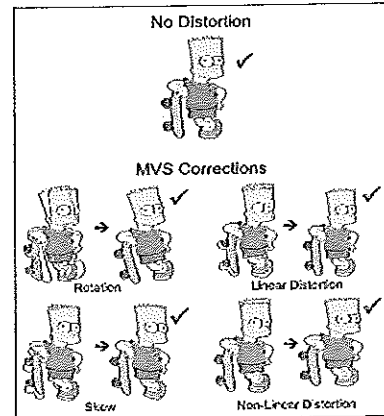
Mobile: 0407 111 989

OPTIONAL ITEMS

ITEM A

Multicam Vision System (MVS)

The Multicam Vision System is the most powerful vision registration system on the market. The power behind the **MVS** is our unique software which is fully integrated within the new Multicam A2MC control system. The primary application for the **MVS** system is digital print finishing where the camera is able to quickly find and recognise conventional registration marks and adjust the machine cutting path as necessary to achieve exact alignment with printed shapes. The **MVS** includes full non-linear/linear distortion, skew and rotation correction. The **MVS** is compatible with all cutting tools that can be used on an Multicam router, including our oscillating knife & tangential knife. This allows virtually any printed material to be cut including card, vinyl, rubber, foam, aluminium, wood, acrylic and lots more which opens up many new markets and opportunities for digital printers.



\$6,950.00

Plus GST

ITEM B

MC-100 Micro-Air Extraction System

The latest technology in efficient swarf removal. Includes swivel overarm hose support and 100mm dia floating dust pickup head. The 100 series extraction system provides increased filter density which provides increased filter density to 0.06 microns which is up to 4 times greater filter area compared to a standard bag system.

\$2,750.00

Plus GST

PRICING SUMMARY

Items 1 - 5

Machine

\$ 50,350.00

Plus GST

Item A

Multicam Vision System (MVS)

\$ 6,950.00

Plus GST

Item B

MC-100 Series Dust Extraction System

\$ 2,750.00

Plus GST

Total:

\$ 60,050.00

Plus GST

SPECIAL PRICE FOR EDUCATIONAL INSTITUTIONS:

\$ 49,950.00

Plus GST

GENERAL TERMS

Payment:

A 10% manufacturing deposit with official purchase order and the signing of the machine order form on page # 10 is required. Production of the machine cannot commence until deposit has been received. Balance of payment prior to shipping from Multicam factory.

Delivery:

At our current production of 3 machines per week, we anticipate (subject to the production schedule) this machine to be ready for shipping in 3- 5 weeks. All transport costs are additional and will vary depending on location from factory. A suitable forklift will be required to unload the machine from the truck and placed in the installation position in your factory. For difficult locations we can arrange a tilt tray delivery. Exact power and air requirements will be supplied prior to installation by our Installations Manager.

Installation / Commissioning / Machine Training:

This is a turnkey installation over 3 days. Training is performed at your premises and is tailored to suit your needs and includes machining and design software (if supplied). Power and air must be available to the machine. All Multicam CNC Routers communicate through Ethernet connection and therefore are wireless capable. However due to environmental conditions (existing networks or physical location issues) it may be necessary to run cat5 cable. This will be determined prior to installation with our IT department. Goods supplied are as per this quotation and are supplied on the basis that the purchaser has determined they are suitable for the intended use. Multicam Systems has a demonstration machine at all offices.

Recommended Design Software:

Most design software programs will output to Multicam machines. Our standard Enroute toolpathing software reads DXF, DWG, AI, EPS, and various file types. Enroute or any CAM software will run to the MultiCAM series of CNC routing machines.

Warranty:

A FULL 2 YEAR Unlimited hour Warranty, direct from Multicam Systems Service Office. Spindles & Vacuum pumps and all third party accessories carry the warranty period of their manufacturers. All warranties exclude misuse, customer damage and wear and tear. Lifetime technical support is included at no further cost. This also includes Remote access for live online support.

Validity:

The prices and terms of this quotation are valid for 30 days.

MULTICAM

CNC ROUTING MACHINERY

MULTICAM MACHINE ORDER FORM

Company Name: State Library Of Queensland

Date: 11 March, 2016

Delivery Address: Cultural Precinct, Stanley Place, SOUTH BANK Queensland QLD

Phone: 07 3840 7382

Fax: 07

ITEMS	Description	Qty	Price Ea (ex GST)	Total
1 - 5	1 Only New 2016 Multicam M- 2412 CNC Routing Machine. includes Items 1 - 5. <i>Quotation Number: Q1103/16-1</i>	1	\$49,950.00	
			Subtotal	
			GST	
			TOTAL	

We wish to proceed with the quotation above and we agree to the terms within this Quotation Number: Q1103/16-1.

Printed Name:..... Signed By: Dated/...../2016.

Printed Name:..... Signed By: Dated/...../2016.

MULTICAM SYSTEMS PTY LTD

ACN 102 807 572 ABN 43 102 807 572

QLD: 42 Trade Street, Lytton Qld 4178
 NSW: 60 Enterprise Dr, Beresfield South (Factory) 2322
 VIC: 40 Ricketts Rd, Mt Waverley Vic 3149

Ph (07) 3348 7866
 Ph (02) 4964 1900
 Ph (03) 9558 8022