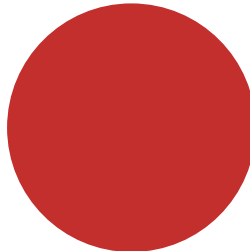
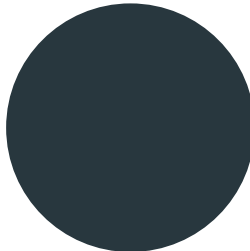
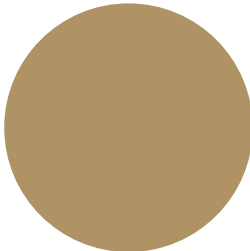
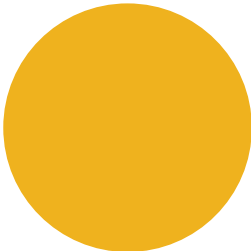
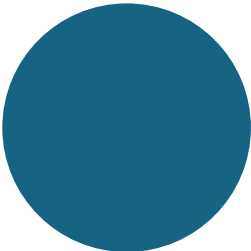


*The*  
**GREAT & GRAND**  
**RUMPUUS**

***COLOUR PALETTE***



*The*  
**GREAT & GRAND**  
**RUMPUUS**

A diagram showing the word "The Edge" in a yellow, sans-serif font. A horizontal grey bar is positioned above the top of the letters 'T' and 'E'. The word "Ascender" is written in white text to the right of the bar.

The Edge Ascender

## Ascender

The vertical stem that extends above the mean line of a font (the part of a lower-case letter that is taller than the font's x-height or the upper portion of an uppercase letter.)

A diagram showing the word "The Edge" in a yellow, sans-serif font. A horizontal grey bar is positioned below the bottom of the letters 't' and 'g'. The word "Descender" is written in white text to the right of the bar.

The Edge Descender

## Descender

The portion of the letter that extends below the baseline of a font.

# Serif

## Serif

A typeface with small decorative edges at the ends of the letters.

# SANS SERIF

## Sans Serif

A typeface with no decorative details, additional strokes or spurs at the end of letters.

*Script*

## Script

Represents a hand written style with pen or brush.

**Baseline**

Baseline

## Baseline

The invisible line where the base of your text rests.

# TRACKING

## Tracking

Adjusting the spacing between letters throughout an entire word.

## Kerning

Kerning is similar to tracking, but only adjusts the distance between two letters.



## Line Height

The distance between two rows of text from baseline of the upper row to baseline of the lower row.



## Glyphs

Characters and symbols in a typeface such as ampersand or asterisk.





(Stefan Kunz)

## Compositions & Grids

Can help with layout and balance, particularly with lettering.



(Etsy: SarahTypes)

## Guides

Can help with calligraphy to maintain a consistent angle of each letter.