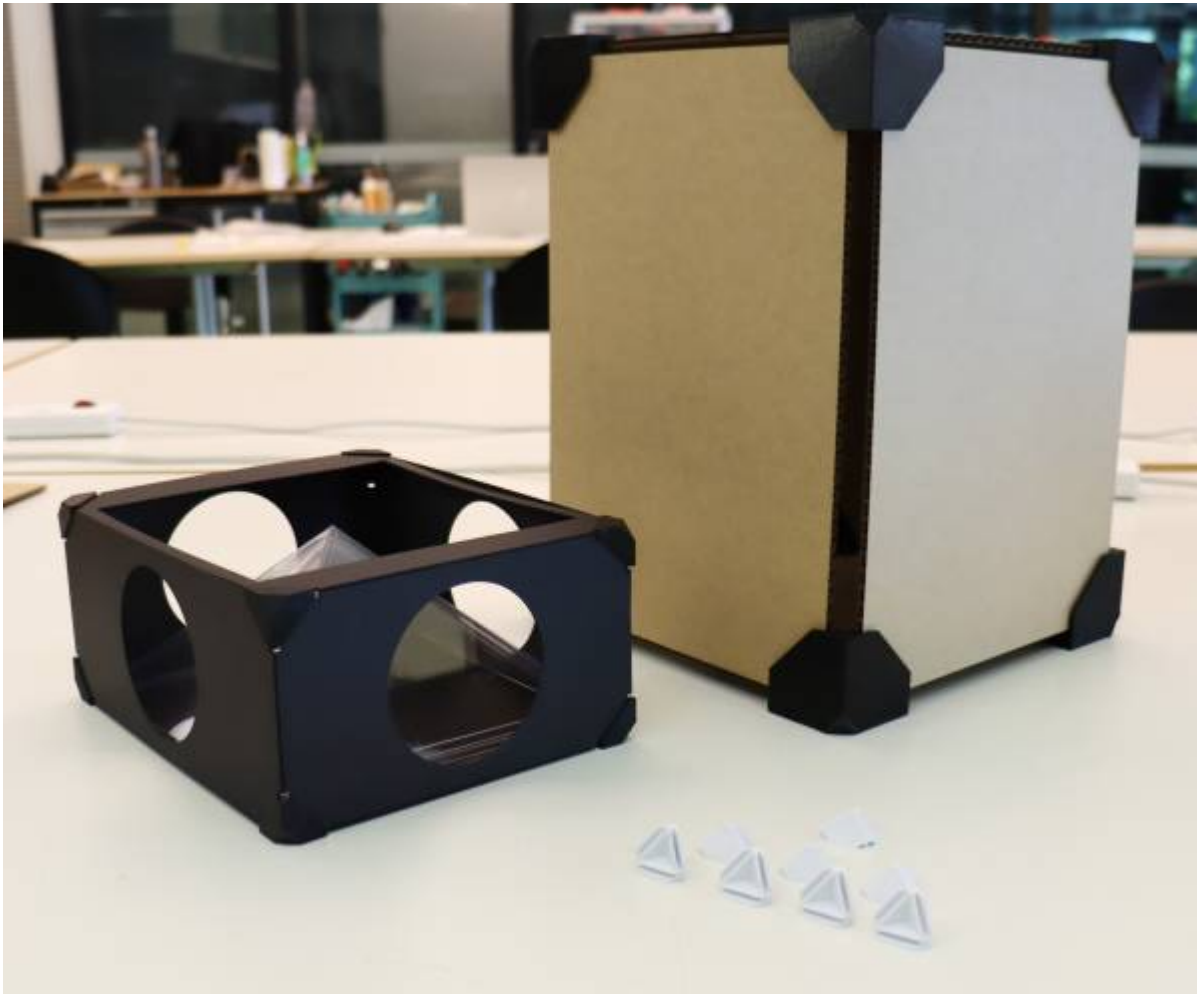


# **QwiqCnrs - 3D printable box corners**

**SLQ Wiki Fabrication Lab 2026/05/30 22:42**

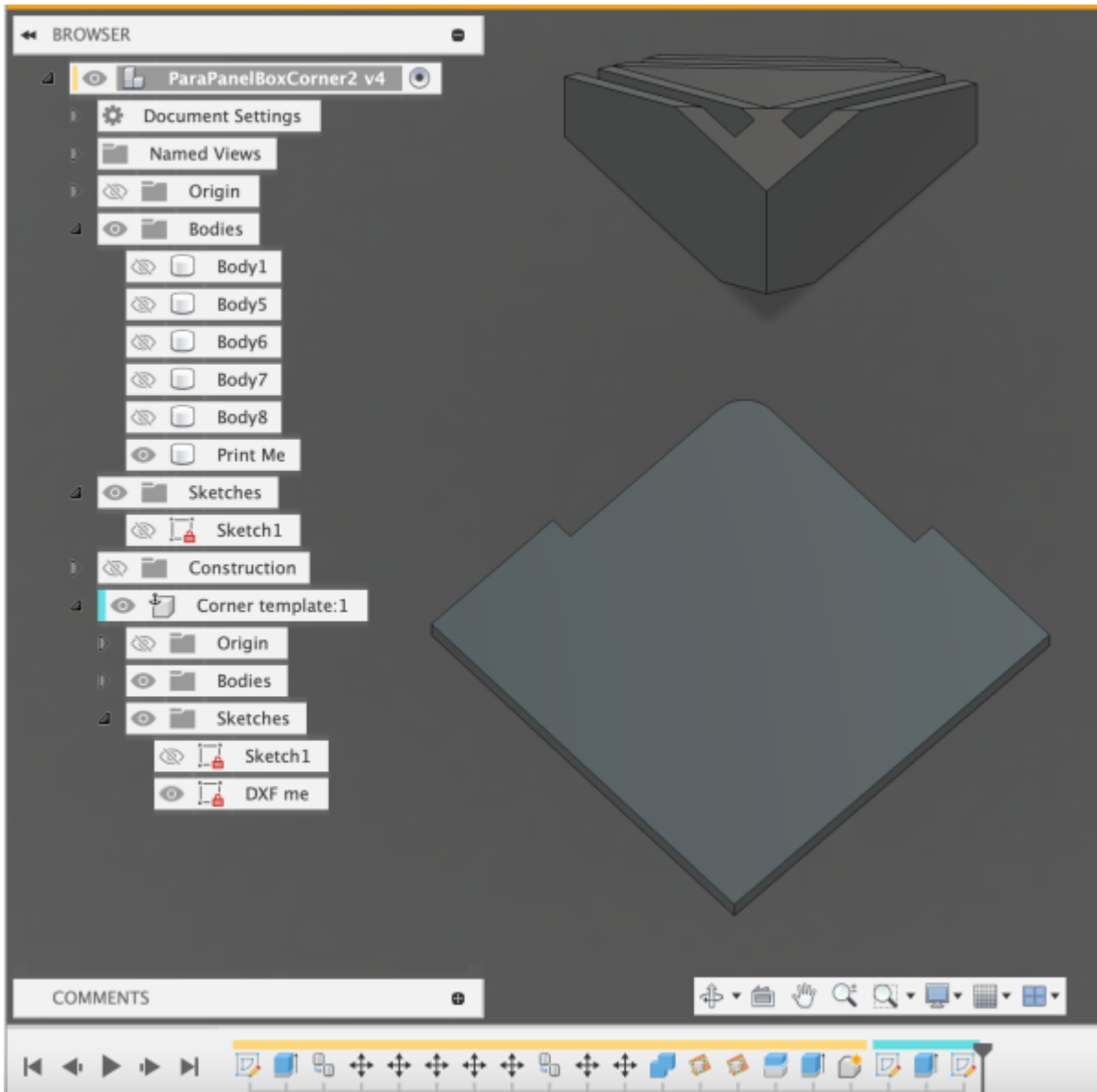
# QwiqCnrs - 3D printable box corners

developed by Mick Byrne 2025

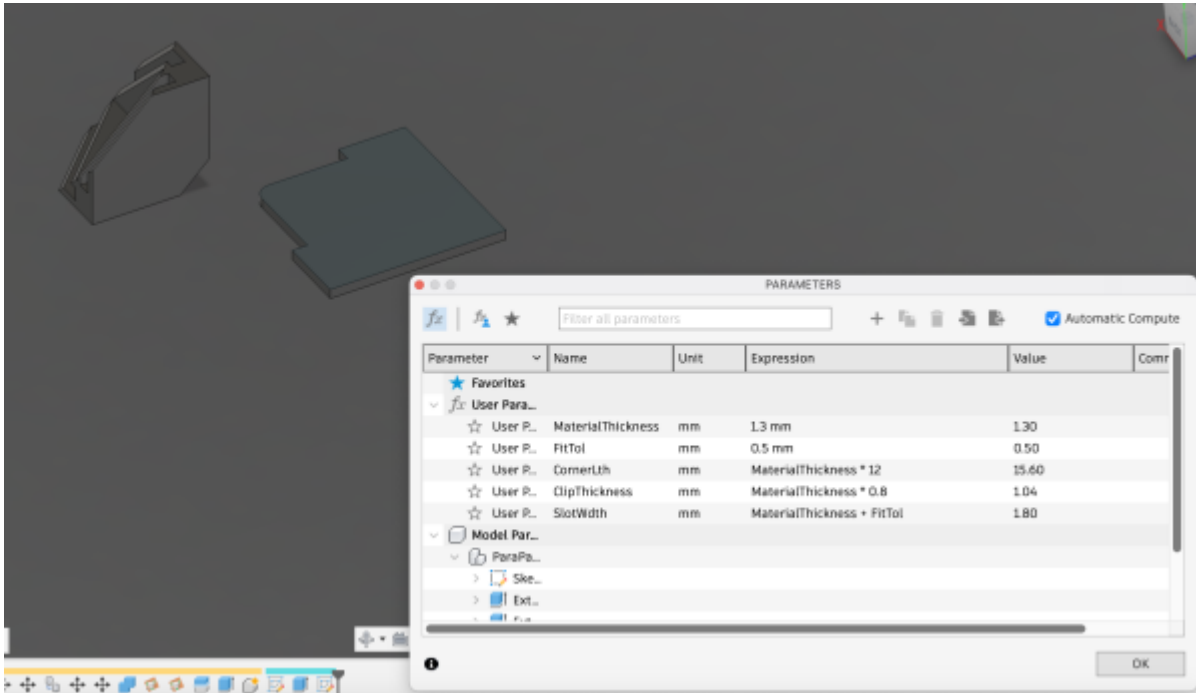


In 2025The Edge offered a Peppers Ghost workshop based on the hologram component of the [Art of Projection](#) workshop.

Instead of gluing up a box 3d printable corners were designed parametrically so that and thickness of card could be turned quickly into a box



The a STL design for the corners and a DXF for a *corner cutting template* can be downloaded after entering your card thickness into the parameters



## Files

7mm 2Ply Corrugated Cardboard - [7mm\\_3dpnt\\_corner.stl](#) [7mm\\_cornercut\\_temp.stl](#)

4mm Single Ply Cardboard - [4mm\\_corner\\_template.dxf](#) [4mm\\_corner.stl](#)

1.3mm Presentation Cardboard - [1.3mm\\_card\\_corner\\_template\\_for\\_printable\\_corners.dxf](#)

[1.3\\_mm\\_printable\\_corner.stl](#)