



Drawing Diagrams

SLQ Wiki Fabrication Lab 2024/07/28 08:28

Drawing Diagrams

We've installed a plug-in called [plantumlparser](#) to enable creation of diagrams and gantt charts. The plug-in uses [PlantUML](#), and valid PlantUML can be put inside the

```
<uml>.....</uml>
```

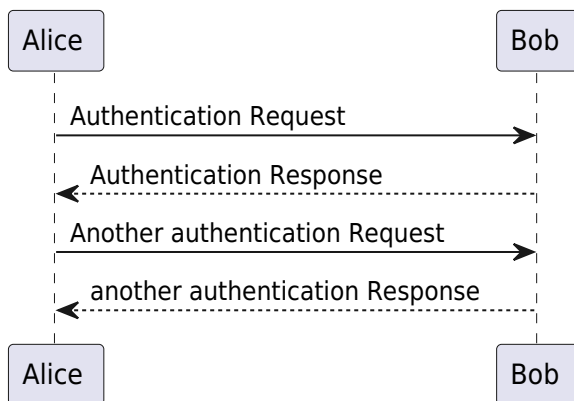
tags.

For more detailed use, check the official [documentation](#).

Diagram Example

```
<uml>
Alice -> Bob: Authentication Request
Bob --> Alice: Authentication Response
Alice -> Bob: Another authentication Request
Alice <-- Bob: another authentication Response
</uml>
```

Becomes...



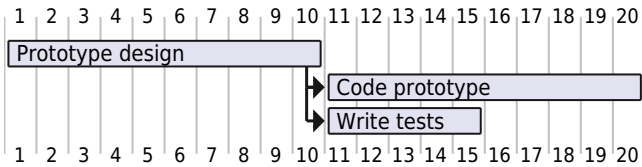
Gantt Example

To create a gantt chart, use the gantt component.

```
<uml>
@startgantt
[Prototype design] lasts 10 days
[Code prototype] lasts 10 days
[Write tests] lasts 5 days
[Code prototype] starts at [Prototype design]'s end
</uml>
```

```
[Write tests] starts at [Code prototype]'s start
@endganttt
</uml>
```

Becomes...



We can make it a larger using scale

```
<uml>
@startganttt
scale 1.5
[Prototype design] lasts 10 days
[Code prototype] lasts 10 days
[Write tests] lasts 5 days
[Code prototype] starts at [Prototype design]'s end
[Write tests] starts at [Code prototype]'s start
@endganttt
</uml>
```

====

