



Brisbane State High Workshops

SLQ Wiki Fabrication Lab 2024/10/03 18:56

Brisbane State High Workshops

Brisbane State High Workshops



Welcome to the SLQ Wiki page for our Brisbane State High School Grampus design workshops.

Imagined Things

The BSHS group contributed Imagined Things to [The Well](#) as their first task.

You can find their contributions numbered 60-78.

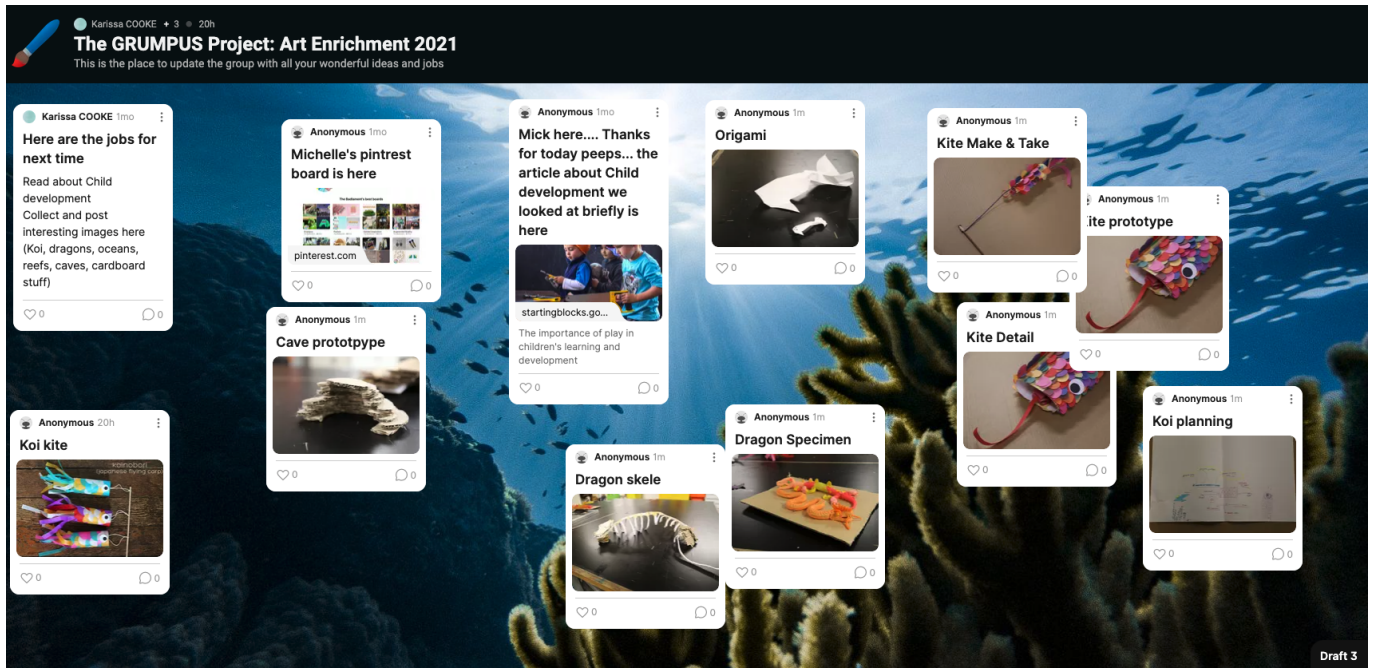
Designed Things

As you work with SLQ on this project, we want to capture your imagination and designs and add these to our Well. Fill in the form linked below once you have something to send to The Well.

[Submit Designed Thing](#)

Communication and collaboration

We have a [padlet](#) for collecting ideas between workshops



Facilitators

Please add your session plans, inspiration and tasks to support students.

Please make sure to fill in a reflection form at the end of the workshop if you are facilitating, these will be linked at the end of this page.

[Session Plan 21 July](#)

[Session Plan 29 July](#)

Facilitator Session Report

[Facilitator Report](#)

[BSH Workshop Report - 22 July](#)

[BSH Workshop Report - 26 Aug](#)

[BSH workshop report 2 Sept](#)

[Brisbane State High Workshop report- 9 Sept](#)

[Brisbane State High - fabrication report 31 August - 20 Sept](#)

[Brisbane State High - fabrication report 21 -25 Sept](#)

[Fabrication report 19 Oct](#)

Fabrication Files

Scales

The correct file for cutting scales is pre-loaded on the CNC as Grampus\Dragon\

Scales_large_splitx13_divots.nc